



Sophos Protection for Linux

Included in our Endpoint Protection

Sophos Antivirus for Linux provides superior on-access scanning for Linux servers and desktops. We deliver excellent performance, stability and reliability, as well as support for the widest range of Linux distributions.

Meet your regulatory requirements while protecting every computer on your network. As part of our Endpoint Protection, it's centrally managed alongside Sophos Protection for Windows, Mac, UNIX and virtualized platforms.

Key benefits

- › Protects Linux servers and desktops
- › Detects and disinfects viruses, spyware, Trojans and worms on-access, on-demand or at scheduled times
- › Ensures superior scanning performance and reliability using a uniquely designed kernel interface module and supports fanotify for on-access scanning
- › Cleans Windows viruses in a non-Windows environment
- › Scans all file systems, not just Samba shares, through scan-everywhere functionality
- › Blocks unknown threats before they cause damage using Behavioral Genotype Protection
- › Enables selective scanning through extensive file exclusions
- › Managed centrally alongside Windows, Mac, UNIX and virtualized platforms in Sophos Enterprise Console
- › Provides pre-compiled support for the widest range of Linux versions and kernels
- › Supports customized Linux versions and kernels through automatic recompilations
- › Enables configuration and detailed logging via a command line interface or web GUI
- › Alerts administrators of virus incidents
- › Updates automatically with the latest protection from SophosLabs, a global network of threat analysis centers
- › Includes 24/7 [certified expert support](#). Contact us anytime for one-to-one assistance

Protection for all your distributions including 64-bit versions

Threat detection The Sophos virus detection engine detects and disinfects viruses, spyware, Trojans and worms. We are 100% Checkmark-certified for spyware detection.

Proactive scanning Talpa—our file intercepting module—provides you superior protection. We deliver on-access, on-demand and scheduled scanning of local hard disks, media drives, shared file systems (such as NFS and Samba) and distributed file systems. For kernels 2.6.38 and above, we also provide fanotify support—the Linux community-developed standard interface for on-access scanning.

Interface options Use a secure web GUI or command line interface to scan volumes, directories and individual files.

Kernel support We support a wide range of Linux kernels, including recent 64-bit versions.

Central management of Linux alongside Windows, Mac and UNIX

Automated alerts Linux computers can be managed by Sophos Enterprise Console. The security dashboard shows real-time security status. Automated email alerts are sent when chosen security thresholds are threatened.

Simplified updating process Download and distribute updates automatically using Enterprise Console. In pure Linux environments, you can also update using cascading servers and web-based updating direct from Sophos.

Customizable policies Active Policies let you create your security policy for Linux computers and servers. Simultaneously apply your policies across multiple groups.

Scanning configuration Configure and run scans using Sophos Enterprise Console.

Try it now for free

Register for a free 30-day evaluation at sophos.com/products.

Fast deployment and easy management on Linux-only networks

Customized deployment Red Hat Package Manager supports deployment in Linux-only environments.

Remote configuration Perform central configuration and updating either remotely through a secure web GUI or using a command line interface.

Virus reporting We automatically report every virus incident to the administrator via SMTP email, making day-to-day management even easier.

Innovative technologies

Seeks out malicious code A range of technologies, including Dynamic Code Analysis, pattern matching, emulation and heuristics, automatically check for malicious code.

Eliminates redundant scanning Decision Caching technology improves on-access scanning performance by intercepting and scanning only files that have changed since last accessed.

Blocks viruses Genotype virus detection technology proactively blocks families of viruses even before specific virus signatures are available.

Prevents intrusion Take advantage of Behavioral Genotype Protection, our built-in intrusion prevention technology. Proactively protect against zero-day malware by detecting new threats before code begins to execute.

Accurate detection We constantly validate our behavioral rulesets against an extensive library of legitimate applications.

Safe while updating Keep your computers protected during updating by using our hot updating technology.

Industry-leading expertise 24/7

Always supported Our 24/7 customer support operation is highly acclaimed. SophosLabs—our global network of threat analysis centers—provides a rapid response to emerging and evolving threats.

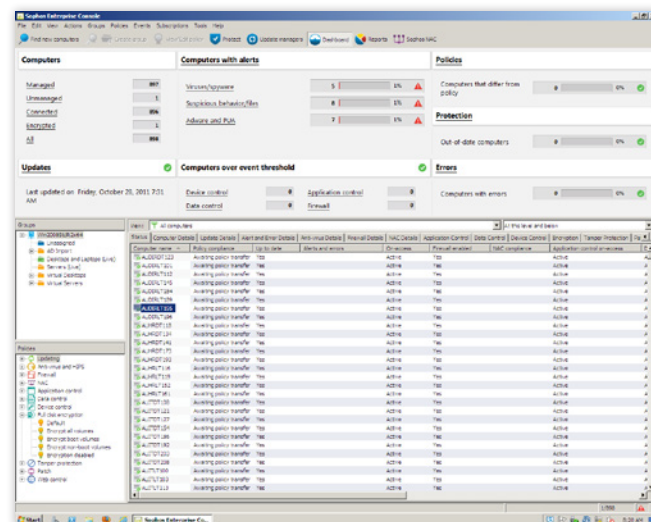
Licensing

Sophos Protection for Linux is included in all of our Endpoint Protection licenses. [Compare.](#)

Languages available

English and Japanese

Protect Mac, Windows Linux, UNIX and virtualized platforms—all from one console.





Platforms supported

Distributions supported

On-access and on-demand scanning

- Asianux 3.0
- Novell Open Enterprise Server 2 (up to SP2)
- Red Hat Enterprise Linux 4 ES/AS
- Red Hat Enterprise Linux 5 ES/AS, Server, Advanced Platform
- Red Hat Enterprise Linux 6 ES/AS, Server
- SUSE Linux Enterprise Server 9/10 (up to SP3)
- SUSE Linux Enterprise Server 10 (up to SP3)
- SUSE Linux Enterprise Desktop 11
- TurboLinux 10*/11 Server
- Ubuntu LTS Server Edition 8.04/10.04/12.04

On-demand scanning only

- Red Hat Enterprise Linux 4 ES/AS
- Red Hat Enterprise Linux 5 Server, Advanced Platform
- Red Hat Enterprise Linux 6 Server
- SUSE Linux Enterprise Server 9.1/9.2/9.3/10/10.1*
- Other Red Hat, SUSE, Novell, and TurboLinux distributions using glibc6 on Intel*
- Ubuntu LTS Server Edition 8.04

* 32-bit only. All others both 32-bit and 64-bit AMD

Hardware

Intel x86 or compatible processor running a 32-bit operating system, including:

- Single-processor systems
- Multiprocessor systems
- Hyperthreaded processor systems

For 64-bit distributions, AMD64 or compatible processor.

Disk space: Minimum 100 MB

Memory: Recommended 512 MB RAM

Note: If you recompile Sophos Anti-Virus for Linux to support a Linux distribution unsupported by Sophos, or a customized Linux kernel, Sophos reserves the right not to provide support where any such recompilation (or customization) has taken place. Sophos will use reasonable endeavors to provide first-line support. Should issues arise that require second-line support, or any other escalation process, Sophos cannot guarantee that such issues will be resolved.

Try it now for free

Register for a free 30-day evaluation at sophos.com/products.

United Kingdom Sales:
Tel: +44 (0)8447 671131
Email: sales@sophos.com

North American Sales:
Toll Free: 1-866-866-2802
Email: nasales@sophos.com

Boston, USA | Oxford, UK
© Copyright 2011. Sophos Ltd. All rights reserved.
All trademarks are the property of their respective owners.

Sophos Data Sheet 11.11v1.dNA

SOPHOS